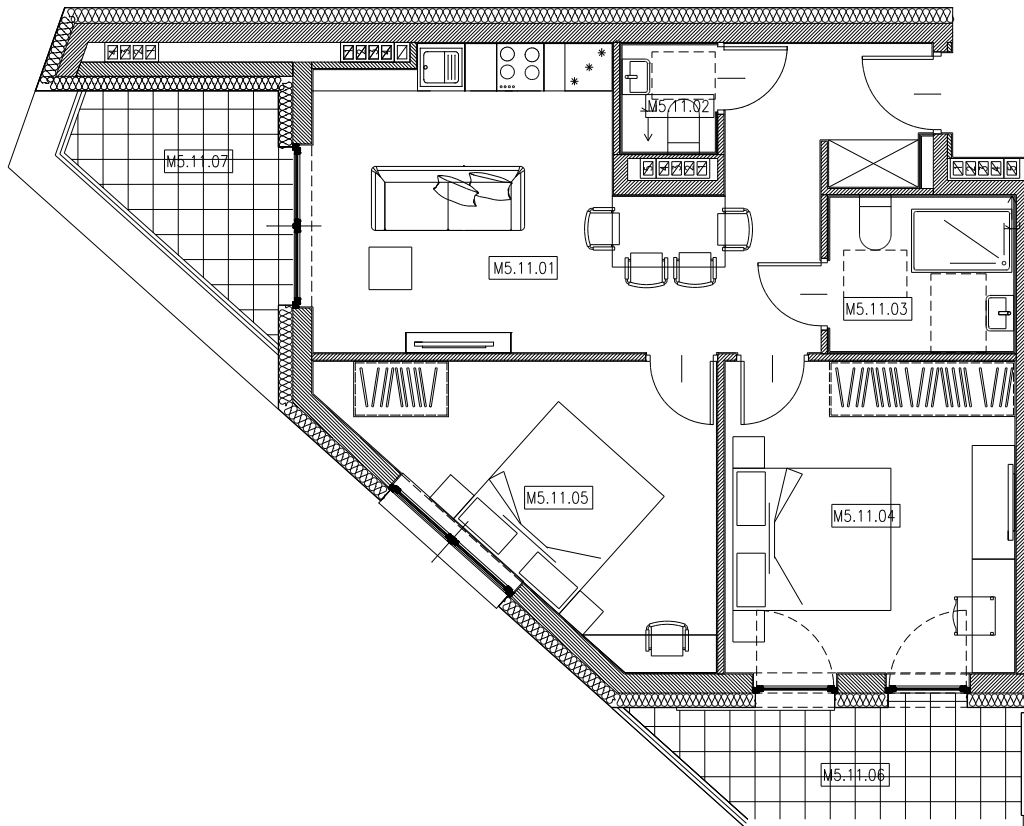
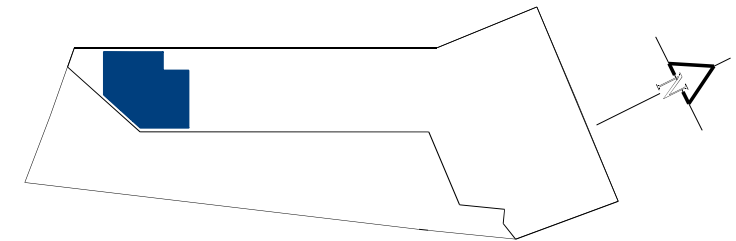


# M5-11 MIESZKANIE DWUPOKOJOWE

V P



M5.11.01	POKÓJ Z AN. KUCH. + KORYTARZ	PARKIET	24,33m <sup>2</sup>
M5.11.02	WC	P.CERAM.	1,60m <sup>2</sup>
M5.11.03	ŁAZIENKA	P.CERAM.	4,56m <sup>2</sup>
M5.11.04	POKÓJ	PARKIET	14,48m <sup>2</sup>
M5.11.05	POKÓJ	PARKIET	13,18m <sup>2</sup>
			58,15m <sup>2</sup>
M5.11.06	BALKON		6,21m <sup>2</sup>
M5.11.07	BALKON		5,67m <sup>2</sup>



**GRZEGÓRZECKA 15**